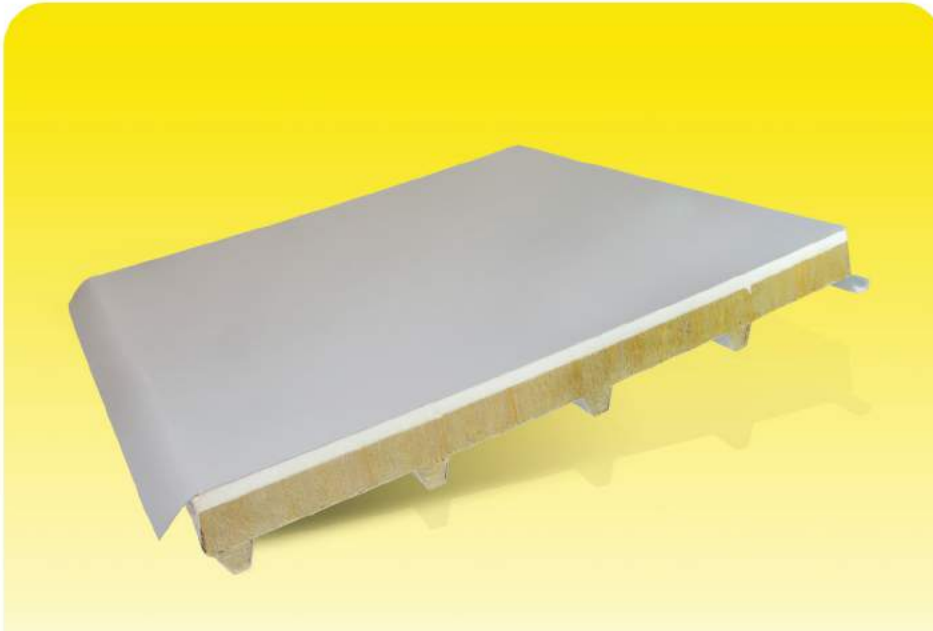


1.12 KOMBI PANEL

It is produced to provide fire resistance, sound and thermal insulation for roofs with a slope smaller than 7 %. It is a stone wool and polyurethane/PIR insulated roof panel that its top surface is covered with PVC or TPO membrane.



Technical Specifications	Kombi Panel	
Useful Width (mm)	1000	950
Rib Height (mm)	35	55
Rb Count	5	4
Sheet Type and Thickness (mm)	Painted Galvanized Sheet (0,60 - 0,70 - 0,80) PVC/TPO Membrane (1,20 - 1,50)	
Paint Type	Polyester PVdF	
Colour	RAL 9002*	
Insulation	Stone Wool + Polyurethane/PIR	
Insulation Thickness (mm) - h	60 - 70 - 75 - 80 - 100 - 120	
Declared Thermal Conductivity _(10°C) (W/mK)	≤ 0,040/0,023	
Reaction to Fire	B-s1, d0	
Reaction to External Fire	Broof (t ₂)	

*It is the standard colour. Other colours are produced on demand.

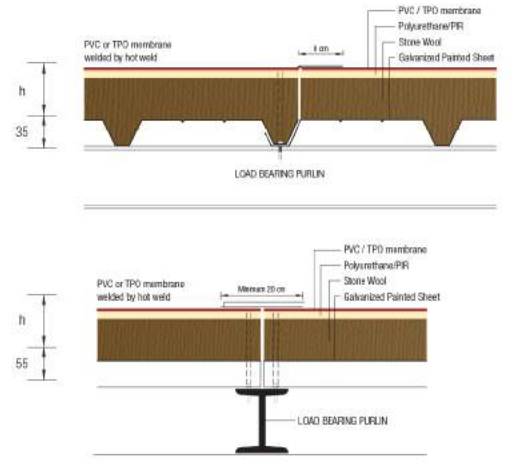
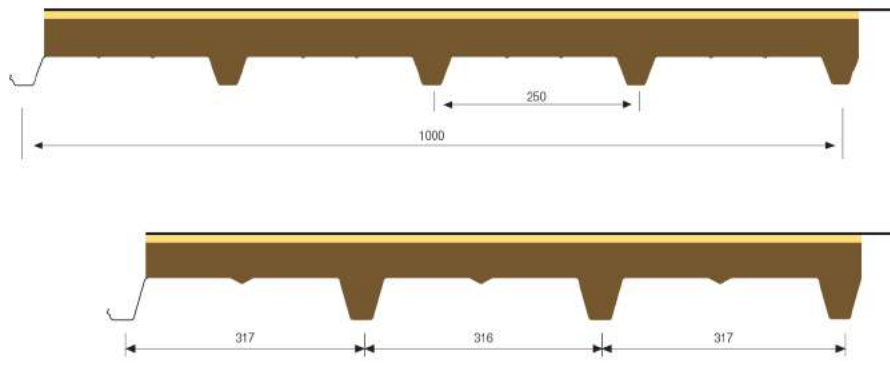
24



1.12 PANEL DETAIL

www.tekiz.com.tr

Panel Joint Detail



Load Table

SPC 1000 5R KOMBI PANEL		Multi Support Span (L/200 L=m)						
Panel Thickness (mm)	Panel weights (kg/m ²)	1,0	1,5	2,0	2,5	3,0	3,5	4,0
		Distributed Load Bearing (P=kg/m ²)						
0,6	14,2	554	260	160	105	60	38	26
0,7	15,1	704	325	188	124	71	45	30
0,8	16,0	840	382	212	140	81	51	34

SPC 950 4R KOMBI PANEL		Multi Support Span (L/200 L=m)						
Panel Thickness (mm)	Panel weights (kg/m ²)	1,0	1,5	2,0	2,5	3,0	3,5	4,0
		Distributed Load Bearing (P=kg/m ²)						
0,6	14,4	1014	482	312	211	109	79	49
0,7	15,3	1310	614	378	256	134	96	59
0,8	16,2	1583	734	435	295	155	111	67

Panel weight is for 75 mm thickness.