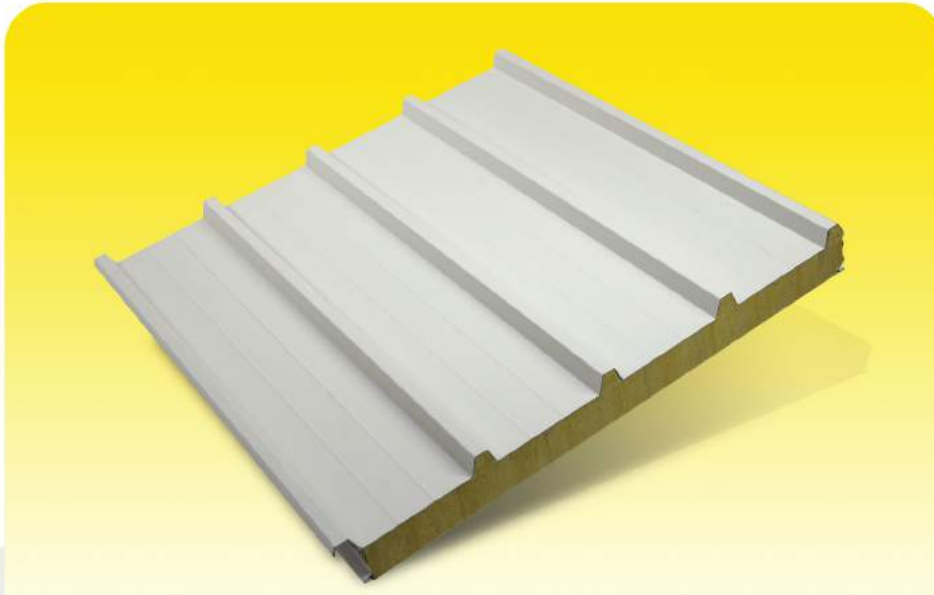


1.5 STONE WOOL INSULATED ROOF PANEL

Composite roof panel with stone wool insulation core. Provides fire safety, heat and sound insulation. Suitable for slopes over 7%.



Technical Specifications	SPC 1000 SW	SPC 950 SW
Useful Width (mm)	1000	950
Rib Height (mm)	35	55
Rib Count	5	4
Sheet Type and Thickness (mm)	Painted Galvanized Sheet (0,50 - 0,60 - 0,70 - 0,80)	
Paint Type	Polyester PVdF	
Colour	RAL 9002 ^a	
Texture	Corrugated	
Insulation	Stone Wool	
Insulation Thickness (mm) - h	50 - 60 - 75 - 80 - 100 - 120	
Declared Thermal Conductivity _(10°C) (W/mK)	≤ 0,040	
Reaction to Fire	A2-s1, d0	
Fire Resistance	REI 120*	

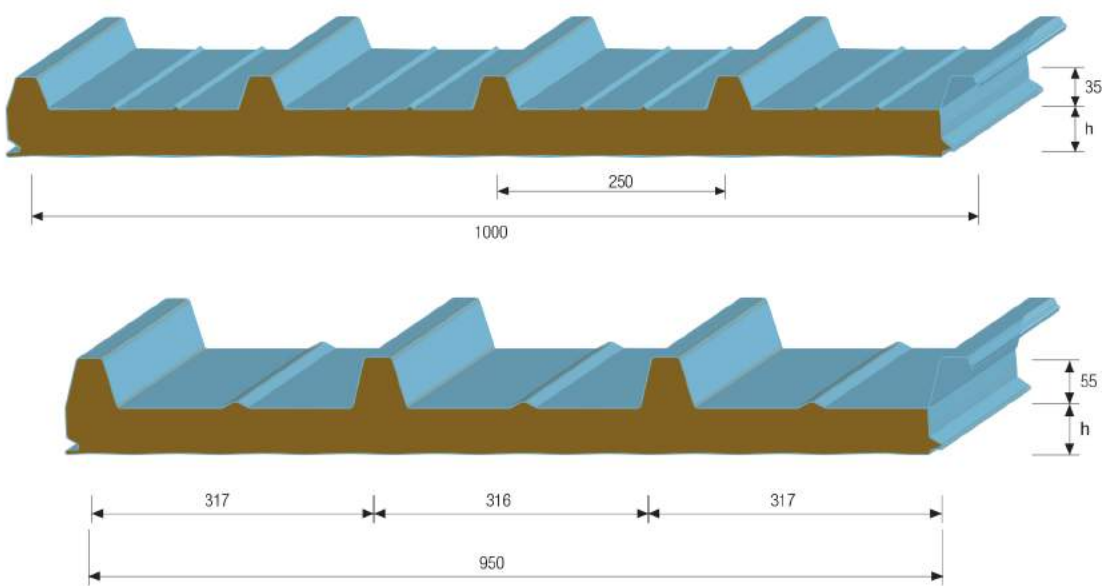
^aIt is the standard colour. Other colours are produced on demand.
*TS EN 13501-2 +A1: Valid for 100 mm thickness and higher.

8



1.5 PANEL DETAIL

www.tekiz.com.tr

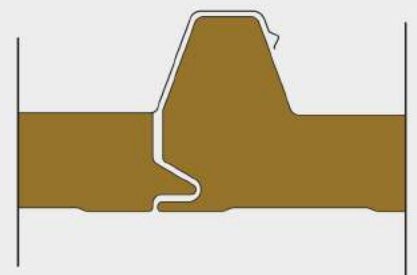


Load Tables

SPC 1000 5R STONE WOOL INSULATED ROOF PANEL		Multi Support Span (L/200 L=m)						
Panel Thickness (mm)	Panel weights (kg/m ²)	1,0	1,5	2,0	2,5	3,0	3,5	4,0
		Distributed Load Bearing (P=kg/m ²)						
50	14,8	1585	727	475	318	160	140	120
60	15,8	1743	792	503	391	280	216	151
75	17,3	2092	1000	740	550	360	286	208
80	17,7	2301	1079	754	587	420	323	223
100	19,7	2761	1331	1005	783	560	431	295

Values on the table apply to the sheet thickness of 0,60 (top) + 0,50 (bottom)
Insulated panel weights may vary depending on sheet thickness tolerances.

Panel Joint Detail



SPC 950 4R STONE WOOL INSULATED ROOF PANEL		Multi Support Span (L/200 L=m)						
Panel Thickness (mm)	Panel weights (kg/m ²)	1,0	1,5	2,0	2,5	3,0	3,5	4,0
		Distributed Load Bearing (P=kg/m ²)						
50	15,6	1901	855	523	393	263	205	148
60	16,6	2091	939	571	441	311	243	175
75	18,1	2509	1180	833	638	443	346	225
80	18,6	2760	1277	857	662	467	365	239
100	20,6	3312	1573	1143	883	623	486	303

Values on the table apply to the sheet thickness of 0,60 (top) + 0,50 (bottom)
Insulated panel weights may vary depending on sheet thickness tolerances.